

**CHILDREN AND YOUNG PEOPLE'S SERVICES**  
**PERFORMANCE REPORT**  
**QUARTER 1 2023-24**



## Contents

<b>1. Our Borough Strategy 2021-30 Priorities</b> .....	3
<b>2. Borough Strategy Priorities and the UN Sustainable Development Goals</b> .....	4
<b>3. Purpose of the Report</b> .....	5
<b>3. Executive Summary</b> .....	6
<b>4. Part 1 - Statistical analysis</b> .....	7
<b>4.1 Performance Against Target</b> .....	8
<b>4.2 The Performance Trend</b> .....	8
<b>4.3 Inter Authority Comparison</b> .....	9
<b>4.4 Summary and conclusion of statistical analysis</b> .....	10
<b>5. Part 2 - Commentary on performance against priority and outcome</b> .....	11
<b>Priority 1 - Ensure children and young people have a positive start in life</b> .....	11

## 1. Our Borough Strategy 2021-30 Priorities

Performance Management in St Helens Borough Council is focused around achieving the 6 strategic priorities outlined in Our Borough Strategy 2021-30.



**Priority 1 - Ensure children and young people have a positive start in life**

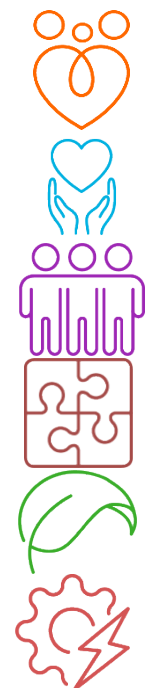
**Priority 2 - Promote good health, independence, and care across our communities**

**Priority 3 - Create safe and strong communities and neighbourhoods for all**

**Priority 4 - Support a strong, thriving, inclusive, and well-connected local economy**

**Priority 5 - Create green and vibrant places that reflect our heritage and culture**

**Priority 6 - Be a responsible council**



## 2. Borough Strategy Priorities and the UN Sustainable Development Goals

The Sustainable Development Goals (SDGs) are a collection of 17 interlinked global goals designed to be a "blueprint to achieve a better and more sustainable future for all". The SDGs were set up in 2015 by the United Nations General Assembly and are intended to be achieved by the year 2030. Making progress towards the global goals by 2030 depends on local action. SDGs fit with Our Borough Strategy Vision and the Council's approach to Reset and Recovery. All 17 Sustainable Development Goals have been mapped against the 'Our Borough Strategy' priorities and outcomes.

 <p>ENSURE CHILDREN AND YOUNG PEOPLE HAVE A POSITIVE START IN LIFE</p>	     	 <p>SUPPORT A STRONG, THRIVING, INCLUSIVE AND WELL-CONNECTED LOCAL ECONOMY</p>	          
 <p>PROMOTE GOOD HEALTH, INDEPENDENCE AND CARE ACROSS OUR COMMUNITIES</p>	   	 <p>CREATE GREEN AND VIBRANT PLACES THAT REFLECT OUR HERITAGE AND CULTURE</p>	      
 <p>CREATE SAFE AND STRONG COMMUNITIES AND NEIGHBOURHOODS FOR ALL</p>	  	 <p>BE A RESPONSIBLE COUNCIL</p>	       

### **3. Purpose of the Report**

The purpose of the report is to inform and update Elected Members on performance against the 6 priorities of the Our Borough Strategy 2021-30 and respective outcomes as set out above. The report covers the period Quarter 1 2023-24 providing the performance position reported over the course of the period. The reporting format splits the report into 2 distinct parts:

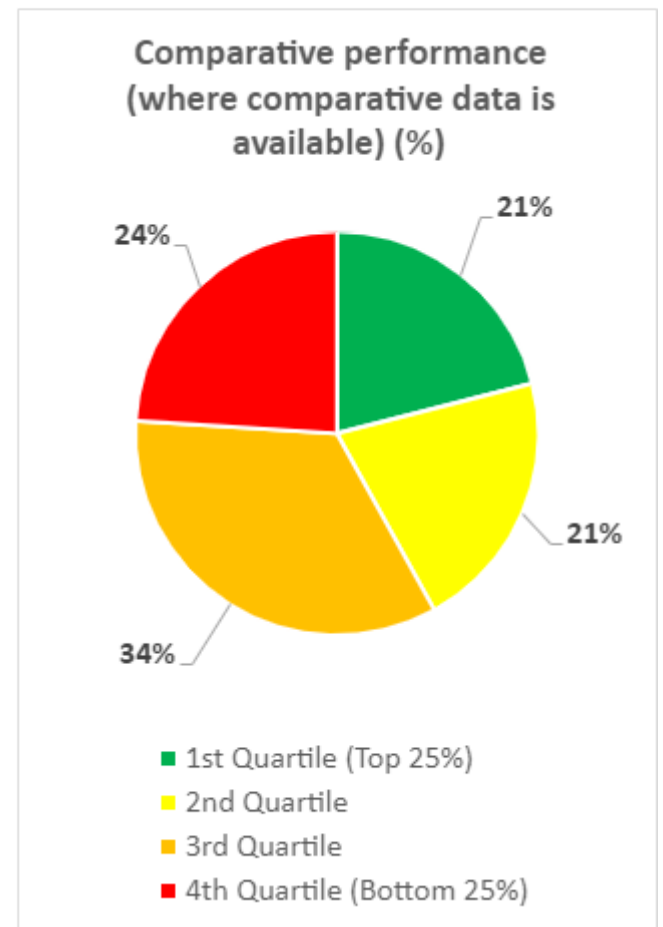
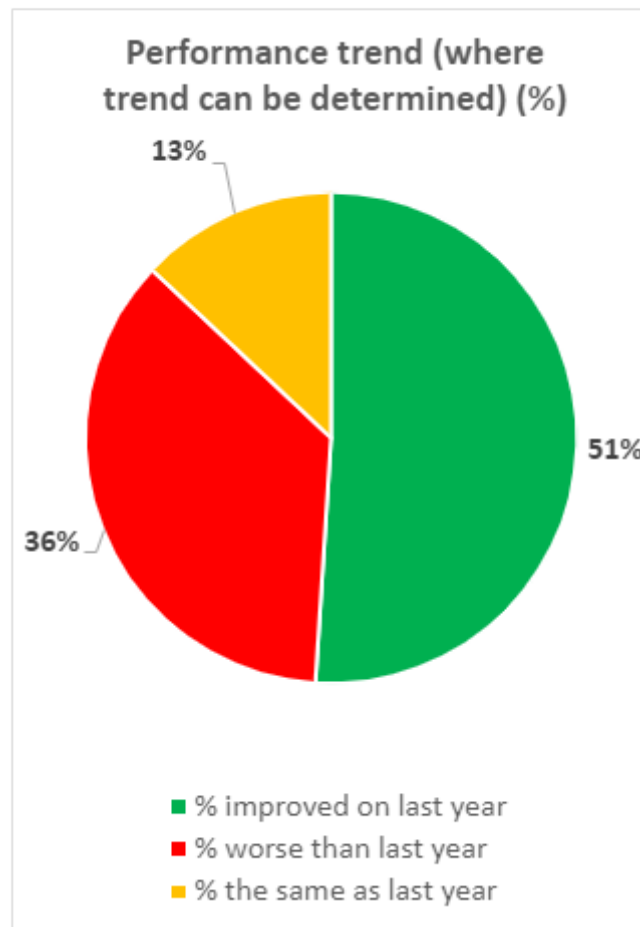
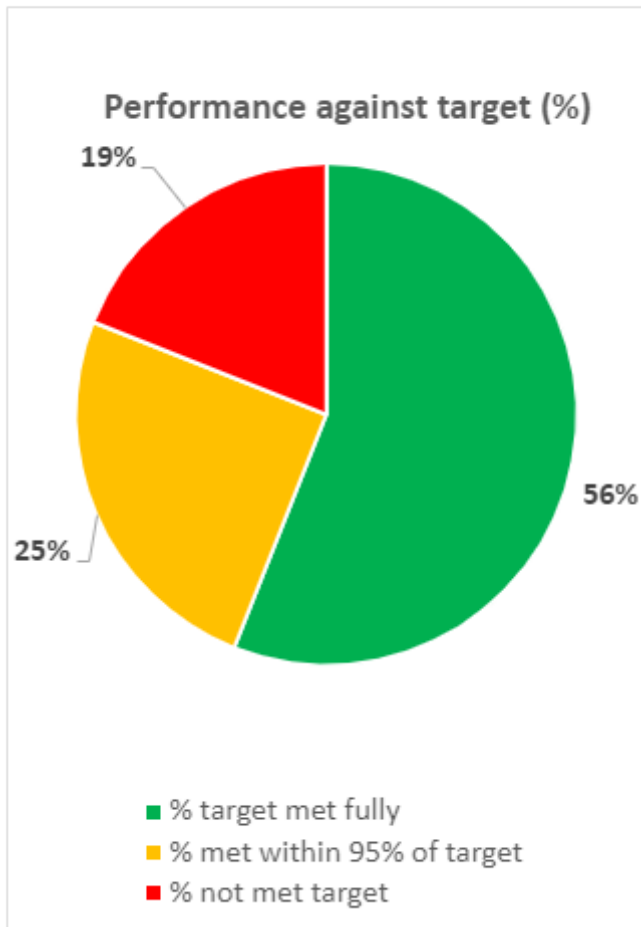
**Part 1** of the report is a statistical analysis of the performance position at Quarter 1 2023-24.

**Part 2** of the report is a commentary on performance against delivery of the 6 strategic priorities and their respective outcomes summarising current performance within the quarter and action being taken to improve performance where required.

### 3. Executive Summary

The charts below provide an overview position of all performance measures across all 6 Borough Strategy priorities as at Quarter 1 2023-24, examining:

- Performance against target.
- Trend - whether performance has improved / worsened since the position 12 months ago.
- Inter Authority performance - how St Helens' performance compares to that of a family group of authorities similar to St Helens.



## 4. Part 1 - Statistical analysis

To measure performance at Quarter1 2023-24, the Council is reporting against a total of **84** performance indicators, where targets were set. The indicators reported are split between Tier 1 and Tier 2:

**Tier 1** – A set of high-level strategic indicators and targets that constitute the Outcomes Framework of the Borough Strategy 2021-2030.

**Tier 2** – A further set of performance indicators and targets to address key priority areas of performance within Directorates / Departments.

In the supporting scorecards for each priority area, this distinction is maintained and both tiers are shown as they are all relevant to an understanding of overall performance.

The Quarter 1 report statistical analysis looks at performance under 3 areas:

1. Performance against targets
2. Trend over 12-months
3. Inter-authority comparison

## 4.1 Performance Against Target

This measure sets out:

- The percentage of indicators by priority where targets have been fully met or exceeded.
- The percentage of indicators by priority that have not fully met target but are within 95% of target.
- The percentage of indicators by priority that have failed to meet the target by more than 5%.

In the supporting scorecards for each priority area, green, amber, and red colours are used to depict indicators in each of the above three bullet point situations.

Priority	Number of Indicators with data	% target fully met	% target met within 95%	% target not met
1. Ensure children and young people have a positive start	23	52% (13)	26% (7)	22% (3)
2. Health, independence, and care	20	50% (10)	35% (7)	15% (3)
3. Safe and strong communities and neighbourhoods	14	50% (7)	7% (1)	43% (6)
4. Strong, thriving, inclusive and well-connected economy	8	50% (4)	25% (2)	25% (2)
5. Green and vibrant places reflecting our heritage and culture	6	50% (3)	50% (3)	0% (0)
6. Responsible Council	13	77% (10)	8% (1)	15% (2)
<b>Total</b>	<b>84*</b>	<b>56% (47)</b>	<b>25% (21)</b>	<b>19% (16)</b>

\* Some new indicators do not have targets set for the year as baseline data is being collected in 2023-24. See individual priorities for details.

A listing of indicators, which have met or exceeded target, have met within 95% of target, or have failed to meet target by more than 5% are shown within each of the 6 priority scorecards.

## 4.2 The Performance Trend

This measure compares performance at Quarter1 2023-24 with performance at Quarter 1 2022-23 by setting out:

- The percentage of indicators where performance compared to last year has improved.
- The percentage of indicators where performance compared to last year has declined.
- The percentage of indicators where performance compared to last year is the same.



In the supporting scorecards for each priority a black arrow pointing up, downwards or sideways is used to depict indicators in each of the above 3 scenarios.

NB. There are a small number of indicators for 2023-24, where performance data in 2022-23 is not available and therefore it is not possible to show a performance trend. Where this is the case N/A appears.

Priority	Number of Indicators with data	% improved on last year	% worse than last year	% the same as last year
1. Ensure children and young people have a positive start	22	64% (14)	32% (7)	5% (1)
2. Health, independence, and care	20	40% (8)	50% (10)	10% (2)
3. Safe and strong communities and neighbourhoods	12	50% (6)	42% (5)	8% (1)
4. Strong, thriving, inclusive and well-connected economy	6	17% (1)	17% (1)	66% (4)
5. Green and vibrant places reflecting our heritage and culture	6	34% (2)	50% (3)	16% (1)
6. Responsible Council	13	69% (9)	23% (3)	8% (1)
<b>Total</b>	<b>79</b>	<b>51%* (40)</b>	<b>37%* (29)</b>	<b>13%* (10)</b>

NB – \*Percentages rounded to nearest whole number

### 4.3 Inter Authority Comparison

This measure shows how performance in St Helens compares to the performance of a family group of authorities similar to St Helens. It does this by ranking each authority's performance by quartile. The top performing 25 % are in the first quartile and the bottom 25% in the fourth quartile. Authorities in between are placed in either the 2nd or 3rd quartiles. Comparative national data is only available to be used for **42** indicators.

In the supporting scorecards for each priority, where this measure is used, green indicates that St Helens is in the top best performing quartile, red that it is in the bottom quartile or yellow/amber that St Helens is in either the 2nd or 3rd quartile). The England average figure (Eng, Av) is also now presented, as is the statistical neighbour group average (LA Av.) to provide additional context to comparative performance.

Priority	Number of Indicators with data	% in 1st quartile	% in 2nd quartile	% in 3rd quartile	% in 4th quartile
1. Ensure children and young people have a positive start	22	23% (5)	27% (6)	18% (4)	32% (7)
2. Health, independence, and care	10	20% (2)	20% (2)	50% (5)	10% (1)

Priority	Number of Indicators with data	% in 1st quartile	% in 2nd quartile	% in 3rd quartile	% in 4th quartile
3. Safe and strong communities and neighbourhoods	0	0% (0)	0% (0)	0% (0)	0% (0)
4. Strong, thriving, inclusive and well-connected economy	6	33% (2)	17% (1)	50% (3)	0% (0)
5. Green and vibrant places reflecting our heritage and culture	2	0% (0)	0% (0)	50% (1)	50% (1)
6. Responsible Council	2	0% (0)	0% (0)	50% (1)	50% (1)
<b>Total</b>	<b>42</b>	<b>21%* (9)</b>	<b>21%* (9)</b>	<b>33% (14)</b>	<b>24% (10)</b>

NB – Percentages rounded to nearest whole number

The latest available picture of inter authority performance largely relates to the 2021-22 financial year. Therefore, St Helens position vis-a-vis its quartile position is based on St Helens performance in that particular year relative to its statistical neighbours. Future reports will be updated to reflect the 2022-23 comparative performance position as and when verified data is published.

#### 4.4 Summary and conclusion of statistical analysis

- **81%** of indicator targets have been either exceeded, met fully, or met within 95% of target. This compares to 73% of indicators at Quarter1 2022-23.
- **19%** of indicator targets were not met. This compares to 27% of indicators at Quarter 1 2022-23.
- The trend measure indicates over the course of the last 12 months **51%** of indicators showed improvement, **13%** of indicators maintained the same performance and **37%** of indicators showed a downward trajectory (NB percentages rounded to nearest whole number). The position in Quarter 1 2022-23 was that **46%** of indicators showed improvement, **6%** of indicators maintained the same performance and **48%** of indicators showed a downward trajectory.
- **21%** of all indicators where comparison is possible are in the top quartile, compared to 35% at Quarter 1 2021-22, whilst **24%** are in the bottom quartile, compared to 32% at Quarter 1 2022-23. 21% and 33% of indicators are in the 2<sup>nd</sup> and 3<sup>rd</sup> quartile respectively, compared to 14% and 19% in Quarter 1 2022-23.
- Annual targets were set where possible within the context of national, Northwest, and local authority comparator group data. Equally targets aspire to be challenging but achievable within the context of the available resources. The targets also take account of performance during the last 3 years which has been an unprecedented period due to the onset and impact of the Covid-19 pandemic, a cost-of-living crisis, increasing demand for services and severe financial constraints.
- Performance should therefore be viewed within the context of what has continued to be a challenging operational period for the Council. The legacy impact of the pandemic, the cost-of-living crisis, rising demand for services and the requirement to deliver significant budget savings has impacted the Council's ability to meet targets and demonstrate improvements in performance trends. Equally in many areas the impact of the pandemic on performance is yet to be fully realised and understood. However, given the effect of the pandemic on St Helens to date there is the strong likelihood that existing inequalities may be widened. This presents risks for future performance, but particularly in areas such as public health, education and schools and children's services where comparative performance is already challenging.

## 5. Part 2 - Commentary on performance against priority and outcome

### Priority 1 - Ensure children and young people have a positive start in life



#### Outcomes

- Children and young people are safe from harm and the lives of children in care improve
- Children and young people's aspirations, attainment and opportunities are raised
- Children and young people are healthy, resilient, confident, involved and achieve their potential

#### Overview of Priority Performance

The tables below provide an overview of performance at Quarter 1 2023-24 for the indicators reported

#### Performance Against Target

Number of Indicators with data	% target fully met	% target met within 95%	% target not met
23	52% (13)	26% (7)	22% (3)

#### The Performance Trend

Number of Indicators with data	% improved on last year	% worse than last year	% the same as last year
22	64% (14)	32% (7)	5% (1)

NB - figures rounded to nearest whole number

#### Inter Authority Comparison

Number of Indicators with data	% in 1st quartile	% in 2nd quartile	% in 3rd quartile	% in 4th quartile
22	23% (5)	27% (6)	18% (4)	32% (7)

## Priority 1 - Ensure children and young people have a positive start in life

### Tier 1

Outcome	Ref	Performance Indicator	Reporting Frequency	Higher / Lower is better?	22/23 Outturn	23/24 Target	Q1 June	% Variance from Target (JUN)	Trend	Comparative Performance
<b>Children and young people are safe from harm and the lives of children in care improve</b>	CYP-001	The number of open Early Help episodes starting	Quarterly	Higher	N/A	1500	421	12.27%	↑	N/A
	CYP-002	The number of early help episodes that have been closed and have subsequently not gone on to have a social care intervention in the following 12 months as a percentage of total closures	Quarterly	Higher	87	87	To be reported in Q2	N/A	N/A	N/A
	CYP-003	Number of children in need at 31 March, per 10,000 children aged 0-17 years	Quarterly	Lower	440.7	440	451	-2.5%	↑	3rd Quartile Eng Av. 334.0 LA Av. 438.2 (2021/22)
	CYP-004	Rate of children subject to a Child Protection Plan per 10,000 under 18-year-olds	Quarterly	Lower	76.2%	67	66.9	8.36%	↔	2nd Quartile Eng Av. 42 LA Av. 60.6 (2021/22)

St Helens Borough Performance Report - Quarter 1, 2022/23

CYP-005	Percentage of children becoming the subject of a Child Protection Plan for a second or subsequent time.	Quarterly	Lower	25.1%	24%	25	-4.17%	↑	4th Quartile Eng Av. 23.3 LA Av. 23.5 (2021/22)
CYP-006	Number of looked after children per 10,000 children within the Borough	Quarterly	Lower	129.3	127	127	0%	↓	4th Quartile Eng Av. 70 LA Av. 108.6 (2021/22)
CYP-008A	Percentage of Children Looked After ceased due to adoption	Quarterly	Higher	8%	10	10	0%	↑	2nd Quartile Eng Av. 10 LA Av. 10 (2021/22)
CYP-008B	Percentage of Children Looked After ceased due to Special Guardianship Order (SGO)	Quarterly	Higher	26.8%	22	15	-31.82%	↓	3rd Quartile Eng Av. 13 LA Av. 20 (2021/22)
CYP-009	Percentage of former care leavers aged 19-21 years with whom the LA is in touch	Quarterly	Higher	95%	97%	93	-2.11%	↓	1st Quartile Eng Av. 92 LA Av. 93.7 (2021/22)
CYP-010	Percentage of former care leavers aged 19-21 in suitable accommodation	Quarterly	Higher	93%	99%	98	-1.01%	↑	1st Quartile Eng Av. 88 LA Av. 90 (2021/22)
CYP-011	Percentage of former care leavers aged 19-21 years in employment, education, or training	Quarterly	Higher	61%	63%	58	-4.92%	↓	2nd Quartile Eng Av. 55 LA Av. 53.5 (2021/22)

St Helens Borough Performance Report - Quarter 1, 2022/23

Children and young people's aspirations, attainment and opportunities are raised	CYP-012	Percentage of Education, Health, and Care (EHC) plans completed within a 20-week period	Quarterly	Higher	19.5%	30%	6.25	-79.17%	↓	1st Quartile Eng Av. 57.9 LA Av. 74.7 (2020/21)
	E&S-005	Percentage of young people academic age 16-17 not in education, employment or training and not known combined	Quarterly	Lower	5.1%	5.3%	6.6	-24.53%	↓	1st Quartile Eng Av. 4.7 LA Av. 5.0 (2022)
	E&S-006	Percentage of state funded schools judged Good or Outstanding by Ofsted	Annual	Higher	89%	90%	90	0%	↑	2nd Quartile Eng Av. 88 LA Av. 84 (Dec 2022)
Children and young people are healthy, resilient, confident, involved and achieve their potential	PH-004	Under-18 conception rate per 1,000 females, 15-17 years (single year rate)	Quarterly	Lower	25.9%	28%	25.9	7.5%	↑	4th Quartile Eng Av. 12.8 LA Av. 19.1 (June 2021)
	PH-005	Percentage of infants being breastfed at 6-8 weeks	Quarterly	Higher	32.6%	31.6%	37.1	17.41%	↑	4th Quartile Eng Av. 49.3 LA Av. 34.5 (2021/22)
	PH-008	Percentage of children aged 5 with MMR vaccination (2 doses)	Quarterly	Higher	88.1%	90%	85.8	-4.67%	N/A	4th Quartile Eng Av. 85.7 LA Av. 90.1 (2021/22)
	CYP-013	Number of first-time entrants to the youth justice system who receive their first substantive outcome or court disposal	Quarterly	Lower	186	159	6	85%	↑	1st Quartile Eng Av. 169.2 LA Av. 157.5 (2021)

St Helens Borough Performance Report - Quarter 1, 2022/23

		per 100,000 population aged 10-17								
	CYP-014	The percentage of children re-offending	Quarterly	Lower	31.9%	36%	28.6	20.56%	↑	4th Quartile Eng Av. 35.6 LA Av. 31.3 (2019)

## Tier 2

Outcome	Ref	Performance Indicator	Reporting Frequency	Higher / Lower is better?	22/23 Outturn	23/24 Target	Q1 June	% Variance from Target (JUN)	Trend	Comparative Performance
Children and young people are safe from harm and the lives of children in care improve	CYP-007	Percentage of children looked after at 31 March with three or more placements during the year	Quarterly	Lower	8%	9%	7.7	14.4%	↑	2nd Quartile Eng Av. 10.0 LA Av. 10 (2021/22)
Children and young people are healthy, resilient, confident, involved and achieve their potential	PH-006	Smoking status at the time of delivery	Quarterly	Lower	13.7%	12%	12.2	-1.67%	↓	3rd Quartile Eng Av. 9.1 LA Av. 12.2 (2021/22)
	PH-007	Under 18 admissions to hospital for alcohol specific reasons per 100,000 population	Quarterly	Lower	66.1% (Q3 - 2022-23)	68	62.5	8.09%	↑	4th Quartile Eng Av. 29.3 LA Av. 40.1 (18/19-20/21)

	PH-009	Percentage of children who received a 2-2.5-year Healthy Child Programme review by the time they were 2.5	Quarterly	Higher	82.7%	84%	90.5	7.74%	↑	3rd Quartile Eng Av. 74.0 LA Av. 86.4 (2021/22)
	PH-010	Percentage of children achieving a good level of development at 2-2 1/2 years	Quarterly	Higher	86.2%	85%	85.1	0.12%	↑	2nd Quartile Eng Av. 80.9 LA Av. 80.3 (2021/22)

## Summary of performance against outcome and action for improvement

### Outcome – Children and young people are safe from harm and the lives of children in care improve

#### Current Performance

- Performance against the outcome showed a mixed picture at Quarter 1 with some improvements shown but also some ongoing challenges in the area of Children’s Social Care.
- **CYP-001** - In Quarter 1 2023-24 a total of 421 early help episodes were initiated across the St Helens partnership. The most common reasons for an early help episode starting in the period were related to Parenting Capacity (27% of episodes started), Domestic Abuse (15%), SEND (12%) and Emotional Wellbeing support (11%). The majority of episodes initiated in the period were led by the Council's dedicated Early Help Team (52%) with education providers and schools being the next largest (36%) contributor of episodes initiated in the period. The number of episodes started in the period (421) is higher than that reported in the April-June period of the previous year (364), with activity showing a 17% increase in early help episodes initiated compared to the previous year.
- **CYP-002** - Quarter 1 data for the number of early help episodes that have been closed and have subsequently not gone on to have a social care intervention in the following 12 months as a percentage of total closures will be reported cumulatively along with the Quarter 2 data in the Quarter 2 Performance report.
- **CYP-003** - At the end of Quarter 1 2023-24, a total of 1,667 children and young people were open to St Helens Children's Social Services, a rate of 451 per 10,000 under 18-year-olds. The number of children open to St Helens Children's Social Services has increased marginally from 1,638 on the 31st of March 2023 to 1,667 on the 30th of June 2023, an increase of 2% over the quarter 1 period. However, the rate is lower than the rate of 474.5 recorded in June 2022. The rate of Children In Need per 10,000 0-17 population reported for St Helens continues to above comparable regional and national averages.



- **CYP-004** - At the end of Quarter 1 2023-24, a total of 247 children and young people were the subject of a Child Protection (CP) Plan and supported by St Helens Children's Social Services, a rate of 66.9 children per 10,000 under 18-year-olds. The number of children the subject of a CP Plan has decreased from 280 children at 31st March 2023 to 247 on the 30th of June 2023, a decrease in the CP population of 12% over the period. The current rate remains the same as that at the end of June 2022. However, St Helens' rate of children subject to a Child Protection Plan continues to higher than the most recent published (2021-22) comparable regional (49) and national (42) rates. The majority of children supported with a CP Plan are supported due to concerns related to Neglect (56%), Emotional abuse (29%) or Physical abuse (13%).
- **CYP-005** – Over the course of Quarter 1 2023-24, a total of 48 children became the subject of a Child Protection (CP) Plan, with 12 of the children (or 25%) becoming the subject of a Child Protection Plan for a second or subsequent time. The percentage of children becoming the subject of a Child Protection Plan for a second or subsequent time. (25%) is marginally higher than the local target (24%) and the position reported at the end of the previous financial year (23%). The latest position is an improvement on the 27% of children becoming the subject of a Child Protection Plan for a second or subsequent time over the course of Quarter 1 2022-23, but marginally above the last published national average of 23.3%.
- **CYP-006** - At the end of Quarter 1 2023-24, a total of 470 children and young people were cared for by St Helens Council, equating to a rate of 127 children per 10,000 under 18-year-olds. The number of Children Looked After (CLA) reported for St Helens on the 30th of June 2023 is broadly the same as the 469 reported at the end of March 2023, and slightly higher than the 464 at the end of Quarter 1 2022-23. The latest CLA population rate reported for St Helens (127) continues to be higher than the most recently published (2021-22) comparable regional (97) and national (70) CLA population rates.
- **CYP-008A** - Over the course of Quarter 1 2023-24, a total of 40 children and young people have been discharged from care with 4 of the children discharged due to adoption, equating to 10% of total care discharges in the period. The percentage is broadly similar to the position reported over the course of 2022-23 (9%) and in line with comparable regional (10%) and national (10%) positions.
- **CYP-008B** - Over the course of Quarter 1 2023-24, a total of 40 children and young people have been discharged from care with 6 of the children discharged due to a Special Guardianship Order (SGO), equating to 15% of total CLA discharges in the period. The percentage of CLA discharges via SGO in the period (15%) is lower that the position reported over the course of 2022-23 (21%) but in line with comparable regional (16%) and national (13%) positions.
- **CYP-009-010-011** - Performance against the 2 of the 3 key outcome indicators for care leavers, that being care leavers in suitable accommodation, and care leavers the local authority is still in touch with remains comparatively strong. Although, the percentage of care leavers in suitable accommodation and care leavers the local authority is still in touch are both marginally below target at the end of Quarter 1 2023-24. The indicator for care leavers in employment education and training with St Helens performance has marginally decreased over the course of Quarter 1 2023-24. compares favourably to regional, national and comparator authorities. In total, 78 of the 134 care leavers were engaged in some form of education, training, or employment (58%) and while performance is slightly behind the local target for the period (63%) it is above the most recently published national average of 55% in 2021-22 and above the regional average of 52% in 2021-22. It should be noted that this is a snapshot measure and due to the relatively small number of care leavers a small number of children can lead to noticeable fluctuations in percentages month on month
- **CYP-007** - In the 12-month period up to and including June 2023, a total of 36 children and young people experienced three or more placement moves in the previous 12-month period, equating to 7.7% of the total CLA population supported by St Helens' Children's Social Care. Current performance is marginally better than the full 2022-23 performance reported for St Helens (8.3%) and continues to be better that the most recent published national (10%) and regional average for 2021-22 (9%).

## Action for Improvement

- **CYP-001** - Quarter 1 states the number of children receiving Early Help services has slightly improved. However, we recognise that there is much work to do to improve our Early Help offer to reduce the demand for specialist services. New governance and oversight arrangements via an Early Help Board are in progress to strengthen the Early Help partnership offer across St Helens. This work along with the Supporting Families Programme and the transformation to Family Hubs (with additional funding) will assist in earlier identification of needs and support within communities avoiding more intrusive statutory services.
- **CYP-003** - We have seen a slight reduction in the numbers of children defined as Children in Need (CIN) compared to June 2022. However, our CIN numbers are higher than our comparators. This reflects the high prevalence of neglect. We are continuing to strengthen our response to CIN, especially recognising and intervening in neglectful parenting. Monitoring systems are in place to ensure CIN work is being improved to prevent escalation to Child Protection plans and children becoming looked after. Neglect remains the primary focus of the CSP.
- **CYP-004 / 005** - We continue to have high numbers of children on Child Protection plans and performance at end of Quarter 1 continues to show us above both the statistical neighbours and England averages. It is noted that children and families are becoming increasingly complex, and this is reflected in regional and national trends. The most deprived local authorities are seeing this to a greater extent. Undoubtedly this is linked to causal factors such as poverty, the pandemic. We will continue to dip sample repeat child protection episodes to both to monitor effective decision making and gain a deeper understanding of the presenting needs and how to support them at the earliest opportunity. A review of our duty service and subsequent feedback received during our ILACs Ofsted Inspection affirms good application of thresholds and effective decision making.
- **CYP-006** - Our CLA (Children Looked After) population continues to be high, and our numbers remain above our comparators. We have put in place robust monitoring to scrutinise decision making when children enter care. We have plans to further develop our Edge of Care offer over the next 12-months. We have seen an increase in UASC (Unaccompanied Asylum-Seeking Children) this now forms 4% of our CLA population and is impacting on the number of Care Leavers. We have developed our tracking systems to ensure permanency is achieved and that exits from care are timely. Some protracted court cases have impacted on this figure during 2022-23 and have carried over into 2023-24. More timely court proceedings will see an impact on this figure as we progress through 2023/24. We are predicted to see an increase in the number of children exiting care to adoption and Special Guardianship Orders (SGOs) within the next few months. Feedback from inspectors during the Ofsted ILACs Inspection was positive in relation to our performance management rigour via tracking systems and processes.
- **CYP-011** - Whilst there has been a slight dip in Quarter 1 on the number of care leavers who are in employment, education, and training (EET) we are confident that we have effective systems in place to support these young people and will continue to address this with enthusiasm and rigour. Inspectors were complimentary about our approach to EET, and we remain confident that the annual target is achievable for this indicator.

## Outcome - Children and young people's aspirations, attainment and opportunities are raised

### Current Performance

- The majority of indicators under this outcome relate to the attainment of children and young people and are only published annually.
- **CYP-012** - Performance for the completion of Education, Health, and Care Plans (EHCPs) to timescale has shown further decline as predicted over the course of Quarter 1 2023-24 and now stands at 6.25%. This is due to the current backlog of overdue cases carried forward from the previous year. The overall volume of plans issued this quarter has increased significantly on last year's figures, and there has been a slight improvement in performance in June, which indicates that the deterioration expected in Q2 may not be as severe as anticipated due to the measures put in place.
- **E&S-005** - Performance against numbers of young people 16 to 17 years old not in employment, education, or training (NEET) and those whose status is not known at the end of June 2023 stands at 6.6%, an increase of 1.2% on the previous year (5.4%). St Helens has seen a significant increase in the number of 16-yr-old young people NEET at the end of the first quarter of 2023-24, 106 young people compared to 57 in the same period of the previous year. The number of 17-year-olds NEET was 132 compared to 99 in the same period of the previous year. The September Guarantee (an offer of education or training) for all yr. 11s is currently underway.
- **E&S-006** - At the end of June 2023, a total of 63 state funded schools (Nursery Schools, Primary Schools, Secondary Schools, Special Schools, and Pupils Referral Units) in St Helens are judged by Ofsted to be good or better for overall effectiveness, equating to 90% of all state funded schools in St Helens. There are 16 schools that are currently judged by Ofsted to be outstanding and a further 47 schools that are judged to be good. The position reported for St Helens at the end of June 2023 is marginally above both the comparable national (88%) and the regional NW (89%) average.

### Action for Improvement

- **CYP-012** - To address the performance challenges in the timeliness of EHCP's, the risk has been added to the corporate risk register and a recovery plan has been produced. Recruitment continues to fill vacancies to the SEND Assessment Team and Educational Psychology Service, and funding for 2 additional posts have been agreed in light of increasing demand. Since November 2022, the SEND Assessment Service has successfully recruited to 9 vacant posts, substantially increasing the capacity of the team. Cases continue to be risk assessed and prioritised to ensure that the most vulnerable pupils needs are assessed. The challenges are regularly communicated to all partners, including parent carers.
- **E&S-005** - The increase in NEET and lack of provision is an issue across LCR, this has been highlighted to ESFA, however the response is that there is enough funding and provision to support the increase in NEET numbers. The LCR LAs over the summer will be producing a paper identifying by borough the specific areas of need and recommendations to address the increasing NEET challenges. This initially will be presented to the Combined Authority.

Analysis of the needs of NEET young people specifically in St Helens has been completed which has identified two main areas where there are gaps in provision, re-engagement provision and online learning curriculum. These findings have been shared with local FE and Training Providers which have resulted in a new re-engagement programme on offer for 16 yr. olds from September, this will be delivered by St Helens College. Discussions about on-line learning is ongoing with a local training provider.

- **E&S-006** - As described in the School Effectiveness Strategy, schools will be supported to attain at least 'Good' status when inspected by the Ofsted as the external regulator. The School Effectiveness team continues to analyse all data (GLD, Phonics, KS1, KS2, KS4, attendance, suspensions, and exclusions) and tailor support to all maintained schools accordingly. Where there are issues with an academy school's performance, this will be raised with the school's headteacher and relevant executive officer within the trust. Good and Outstanding schools will be encouraged to take responsibility for their own improvement as well as receiving a core of support from the Local Authority. The core offer for all schools includes access to headteacher briefing sessions, Learning Partnership, Governors' Forum, comprehensive CPD / training package for all schools, access to TESSA (Triage for education support and specialist advice), support / challenge linked to monitoring and moderation duties (completed and quality assured during Summer 23 and will be repeated in the new academic year) and support from statutory services such as Virtual School and SEND. Where schools are vulnerable for not maintaining / achieving at least a 'Good' outcome, a banded package of specialist advice and support is offered through the School Effectiveness Team. This can involve Achievement and Improvement Boards, bespoke school reviews and use of specialist consultants. Schools are sent a weekly bulletin from across all services within Education and Learning. This bulletin allows information from the LA, DfE, Ofsted and other key partners to be disseminated to schools, thus strengthening information sharing and aiding compliance.

## Outcome - Children and young people are healthy, resilient, confident, involved and achieve their potential

### Current Performance

- Performance within the outcome of improving children's health and resilience continued to remain challenging in areas, but also shows areas of improvement.
- **PH-004** – Further data on the under-18 conception rate has yet to be published following the data reported within the Performance Outturn Report 2022-23. Therefore, the latest figure relates to Quarter 4 December 2021 where the rolling 12-month rate for St. Helens was 25.9 conceptions per 1,000 females aged 15-17. This was higher than the England and North West rates of 13.1 and 16.4 per 1,000 respectively. In Quarter 4 (Dec 2021) St. Helens had the 7th highest rate in England, which was a reduction from 4th highest in Quarter 2 and 5th highest in Quarter 3.
- **PH-005** – Historically, St Helens has had low rates of breastfeeding. Data for Quarter 1 2023-24 shows that 37.1% of infants being breastfed at 6-8 weeks in St. Helens. This is an improvement on the 2022-23 Quarter 4 figure of 32.6%, but lower than the England and North West figures of 49.5% and 42.9% respectively.
- **PH-008** - The most recently published data for the percentage of children aged 5 have had 2 doses of the MMR vaccination relates to Quarter 4 2022-23 which showed that 85.8% of children in St Helens had 2 doses of the vaccine. This is a decrease from the previous quarter where, 86.9% of children aged 5 had 2 doses of the MMR vaccination. St. Helens had a slightly higher percentage uptake compared to England and the North West averages of 85% and 85.4% in Quarter 4 2022-23.

- **CYP-013** – Over the course of Quarter 1 2023-24, one young person in St Helens became a first-time entrant to the Youth Justice System, which equates to a rate of 6 per 100,000 10–17-year-olds and shows a significant drop on the same period in the previous year. In Quarter 1 2022-23 St Helens had 5 young people become a first-time entrant which equated to a rate of 30 per 100,000 16–17-year-olds.
- **CYP-014** – Levels of youth reoffending have historically been St Helens' Youth Justice Service's biggest challenge. The latest recorded reoffending figure for St Helens, published by the Youth Justice Board for a 12-month rolling cohort from June 2020 - July 2021 was 28.6%. This is a significant reduction on the previous year's data which showed reoffending levels of 44%. Published data is from Police PNC/ Ministry of Justice and is time-lagged by 2 years.
- **PH-006** – St Helens has continued to have a comparatively high percentage of expectant mothers smoking at the time of delivery. The most recently published quarterly data on smoking status at the time of delivery relates to Quarter 1 2023-24 where 12.2% of mothers in St. Helens were known to be smoking. Also published are the verified annual figures for 2022-23 which showed that 13.7% of mothers were smoking at the time of delivery in St Helens over the year. This figure is much higher than the 2022-23 annual figures for England and the North West which were 8.8% and 10.3% respectively.
- **PH-007** – Alcohol related hospital admissions among under-18s in St Helens have shown some improvement, however rates remain very high. The most recently published rolling three-year rate of alcohol specific hospital admissions among under 18s relates to Quarter 4 2022-23. The rate was 62.5 admissions per 100,000 under 18 and related to a total of 68 admissions over the three-year period. The most recent rate is a reduction from the previous quarter's data of 66.1 per 100,000 (pertaining to 74 admissions over the three-year period). Comparator data is only available for the 2019-21 where St. Helens' rate of 81.4 was significantly higher than the England and North West rates of 29.3 and 40.1 per 100,000 respectively.
- **PH-009** - The percentage of children in St. Helens who received their 2 - 2.5-year review by the time they were 2.5 during Quarter 1 2023-24 was 90.5%. St Helens' performance is better than target and compares favourably to the England and North West averages of 75.3% and 78.6% respectively.
- **PH-010** - The percentage of children achieving a good level of development at 2 - 2.5 years in St. Helens during Quarter 1 2023-24 was 85.1%, which is better than target and higher than the England and North West averages of 80% and 79.4% respectively.

### Action for Improvement

- **PH-004** - The latest data shows an improvement from the previous quarter in relation to teenage conceptions; however, St Helens remains an outlier compared to regional and national averages. Children's Scrutiny Committee recommendations made for the Teenage Pregnancy spotlight Review have now been accepted by boards, and plans are in place to reconvene the local Teenage Pregnancy strategy group during autumn. Training will be offered to primary care staff to increase the number of staff able to provide long-acting contraception and new partner agencies continue to be trained up to offer support to young people, as part of the condom distribution scheme. Cheshire & Merseyside's Women's Health and Maternity (WHAM) leads have established a sub-regional Teenage Pregnancy forum to share support and expertise across the network whereby we presented our approach to date as an example of good practise.
- **PH-005**- Recruitment is in progress to increase capacity in the Specialist Infant Feeding Team with Family Hubs funding and improve breastfeeding rates. There's a focus on staff training and capacity building of partner agencies, as the team put plans in place to start their improvement journey

working towards achieving UNICEF Baby Friendly Initiative standards. A campaign to recruit businesses to become Baby Friendly during World Breastfeeding Week (1st - 7th August) has been delivered, and there is focussed work underway to improve the breastfeeding education and support delivered for pregnant women during the antenatal period.

- **PH-006** - Maternity services have received NHS England funding to improve Smoking In Pregnancy, as part of the Tobacco Dependency programme in hospitals, which will be performance managed by the NHS. Public Health and the CYP Integrated Commissioning Team are having ongoing discussions with maternity services to explore what further antenatal support is needed to improve this outcome.
- **PH-007** - Local intelligence suggests that those young people who attend hospital for alcohol specific reasons are largely young people experiencing emotional distress and there are some links with self-harm. Pathways from A&E into the Young People's Drug and Alcohol Team have been strengthened in partnership with the acute hospital trust and referrals are now increasing, meaning more young people are getting the support they need. Thus, although the data indicates the improvements, we are making are having an impact, there is still more to be done. A multi-agency task group has been set up in August to look at developing a wider multi-agency response to those young people.
- **PH-008** - As part of the UK routine schedule children should have received two doses of MMR vaccine by the age of 5 years. We are trying to improve uptake given the national increase in measles cases. Engagement work is planned with local GP practices with the lowest reported MMR uptake rates to understand challenges and issues and funding has been assigned to support practices with possible interventions to make improvements to the MMR uptake. Children staying in initial accommodation in St Helens are also being offered MMR vaccination as per UK routine vaccination schedule as part of an NHS England commissioned pilot. Local communications are also being developed to raise awareness among parents of the need to ensure that their child is protected with MMR vaccination.
- **PH-009** - The aim as regards 2 - 2.5-year-old Health Child programme review coverage is to maintain current performance as the 0-19 service have overachieved on the local target, and are now performing better than other their counterparts, and above last published regional and national averages.
- **PH-010** The percentage of children achieving a good level of development at 2 - 2.5 years has shown a slight reduction on the previous quarter, however this was anticipated as the proportion of children assessed has increased during this quarter, this includes a better reach to families who are sometimes don't engage well with services. However, although the data indicates attainment is better than national and regional averages, caution is advisable as there is ongoing joint work with early years staff and 0-19 service (Family Hubs priority) to review and possibly replace the assessment tool with a more sensitive and effective (ELIM) tool to ensure children are identified at the earliest opportunity for development support required, such as speech, communication, and language.

For more information about individual performance indicators that support the achievement of these outcomes please see the scorecard.